



1948_Roscoe_4x5_roll-film01.tif



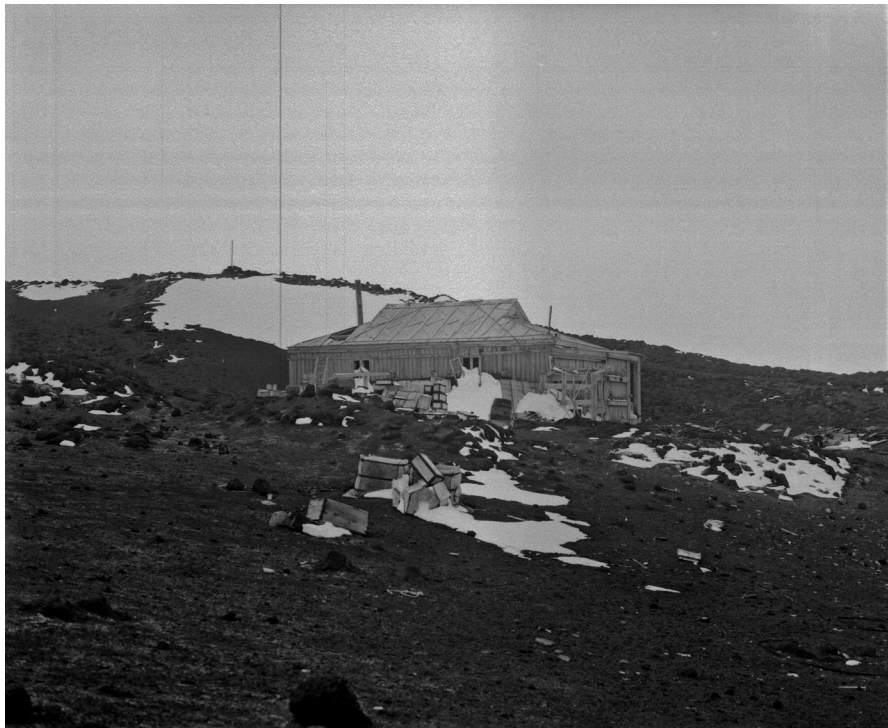
1948_Roscoe_4x5_roll-film02.tif



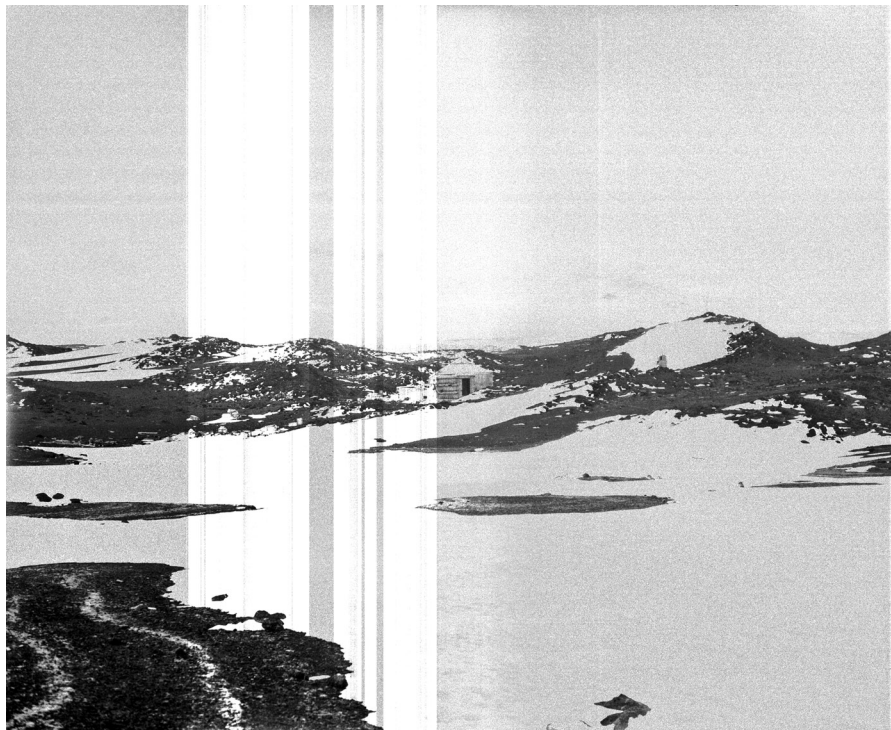
1948_Roscoe_4x5_roll-film03.tif



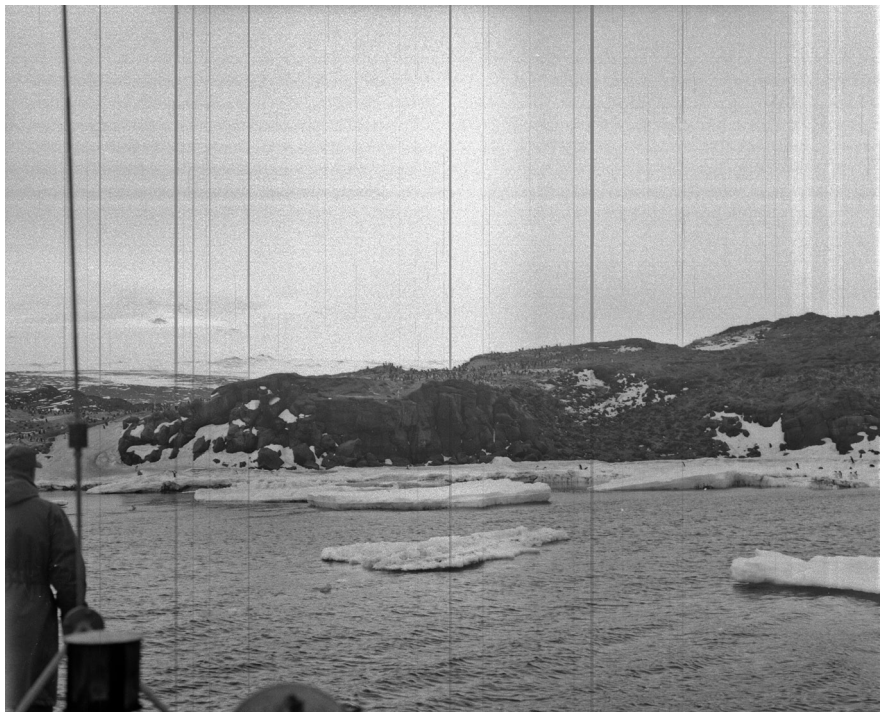
1948_Roscoe_4x5_roll-film04.tif



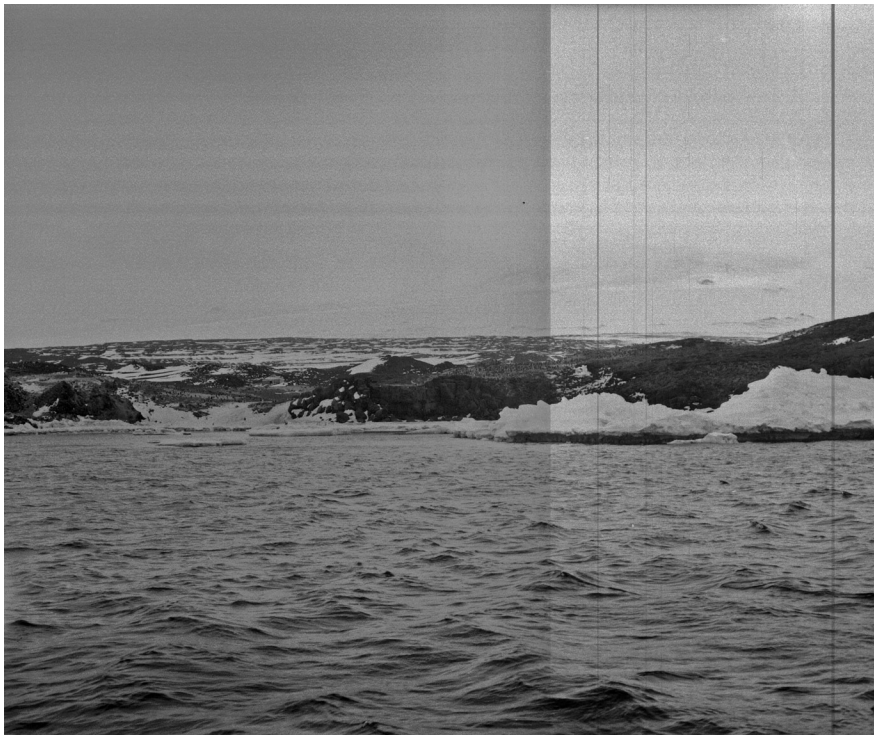
1948_Roscoe_4x5_roll-film05.tif



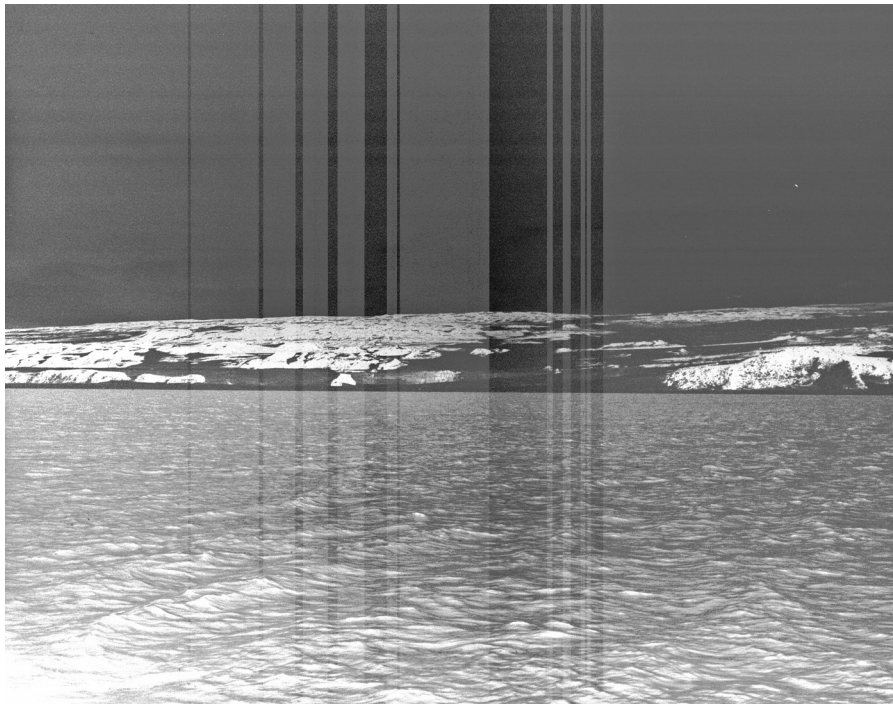
1948_Roscoe_4x5_roll-film06.tif



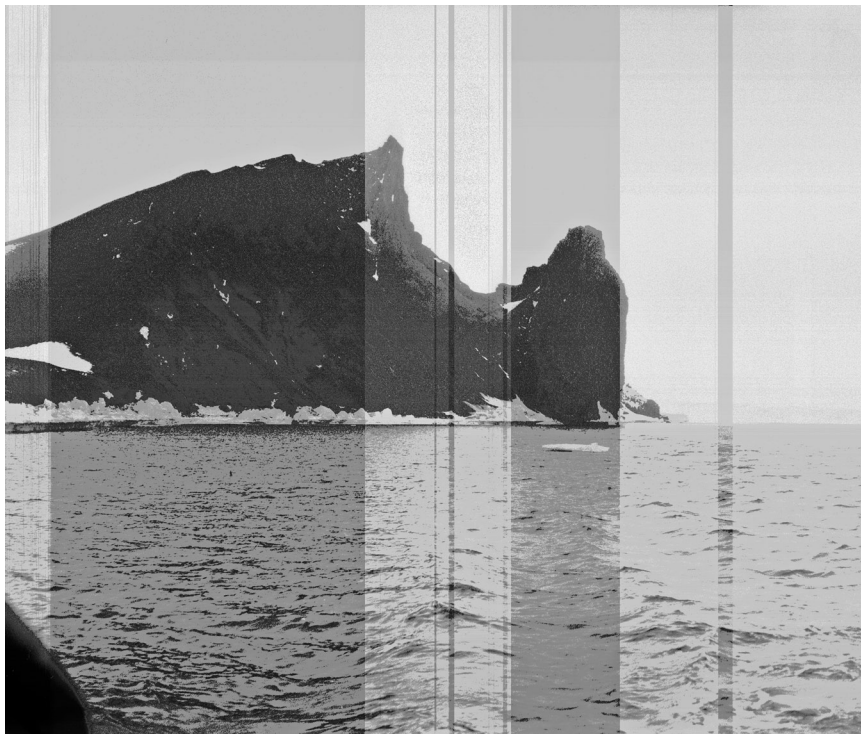
1948_Roscoe_4x5_roll-film07.tif



1948_Roscoe_4x5_roll-film08.tif



1948_Roscoe_4x5_roll-film09.tif



1948_Roscoe_4x5_roll-film10.tif



1948_Roscoe_4x5_roll-film19.tif



1948_Roscoe_4x5_roll-film20.tif



1948_Roscoe_4x5_roll-film21.tif



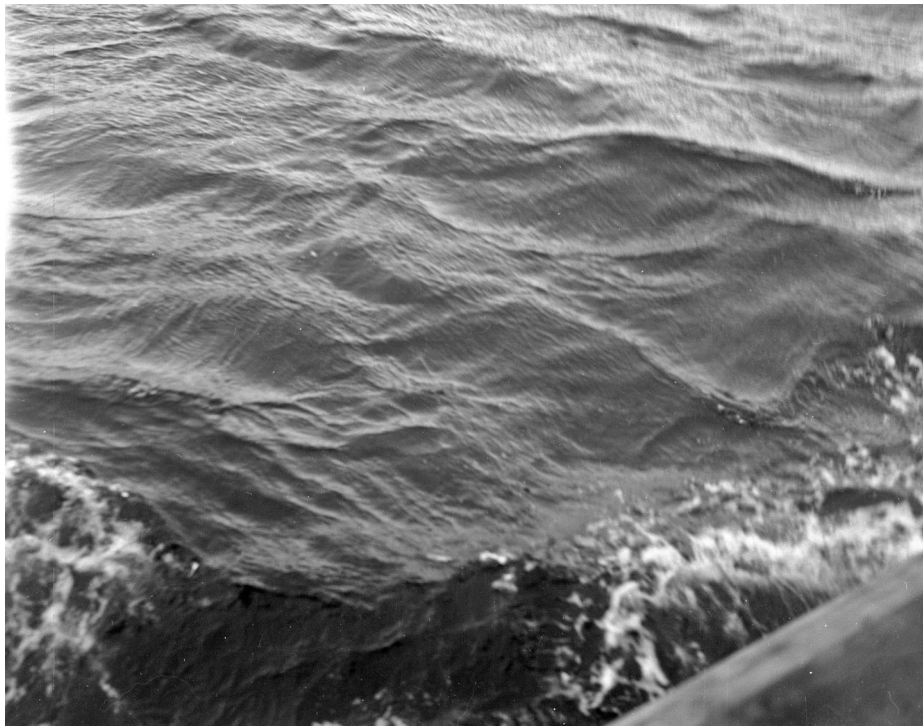
1948_Roscoe_4x5_roll-film22.tif



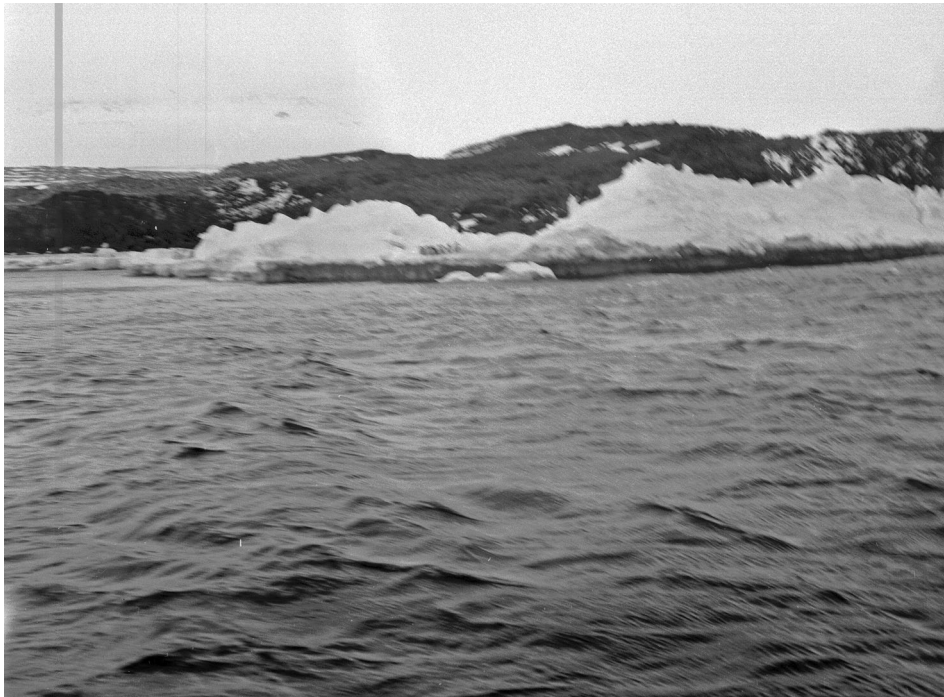
1948_Roscoe_4x5_roll-film23.tif



1948_Roscoe_4x5_roll-film24.tif



1948_Roscoe_4x5_roll-film25.tif



1948_Roscoe_4x5_roll-film26.tif



1948_Roscoe_4x5_roll-film27.tif



1948_Roscoe_4x5_roll-film28.tif



1948_Roscoe_4x5_roll-film29.tif



1948_Roscoe_4x5_roll-film30.tif



1948_Roscoe_4x5_roll-film41.tif



1948_Roscoe_4x5_roll-film42.tif



1948_Roscoe_4x5_roll-film43.tif



1948_Roscoe_4x5_roll-film44.tif



8295_Eastman.tif



070608-1550_Shackleton_film.jpg



070608-1551_Shackleton_film.jpg



**KODACOLOR
REVERSAL**
EXPOSURE INDEX 30

RECONNAISSANCE BASE
FOR RECONNAISSANCE AND CHARTING

7 in. x 18 ft.

Plus Spaque Leader and Trailer, each 5 ft.
For Cameras F-1, F-3, F-14, F-25, F-56

Spec. No. R-21214-A
Navy Stock No. AF-31421-10
FROM PHOTOGRAPHIC, AERIAL

DEVELOP BEFORE EXHIBITION NUMBER

81-327-5

MADE IN ROCHESTER, N. Y., U. S. A.
EASTMAN KODAK COMPANY

DATE FOR No. MADE BY

070608-1552_Shackleton_film.jpg

AERO FILM

KODACOLOR REVERSAL

EXPOSURE INDEX 40

RECONNAISSANCE BASE
FOR RECONNAISSANCE AND CHARTING

3 in. x 18 ft.

Plus Chaque Leader and Trailer, each 5 ft.
For Containers F-1, F-2, F-14, F-25, F-56

Spec. No. K-21213-A

Navy Stock No. FD-F-31421-1D
FILM PHOTOGRAPHIC, AERIAL

DEVELOP.
BEFORE

EMULSION
NUMBER

81 - 327 - 5

MADE IN ROCHESTER, N. Y., U. S. A.
EASTMAN KODAK COMPANY

DATE _____ JOB No. _____

Spec. No. B-1214-A
Navy Stock No. G-F-31421-10
FILM PHOTOGRAPHIC, AERIAL

DEVELOP
BEFORE

EMULSION
NUMBER

811-327-5

MADE IN ROCHESTER, N. Y., U. S. A.
EASTMAN KODAK COMPANY

DATE

JOB No.

ROLL No.

STRIP No.

SUBJECT

CAMERA

ALTITUDE

REMARKS

FOCAL
LENGTH

EXPOSURE



Eastman_Aerographic_S

AERO FILM

**KODACOLOR
REVERSAL**

EXPOSURE INDEX 50

RECONNAISSANCE BASE

RECONNAISSANCE CHARTING

FOR RECONNAISSANCE AND CHARTING

7 in. x 10 in.

Plus Opaque Leader and Trailer, each 5 ft.
For Cameras F-1, F-8, F-14, F-25, F-56

Spec. No. R-21214-A

Navy Stock No. 78-F-31421-10

FILM PHOTOGRAPHIC, AERIAL

DEVELOP
BEFORE

EMULSION
NUMBER

81-327-0

MADE IN ROCHESTER, N. Y., U. S. A.

EASTMAN KODAK COMPANY

JOB No.

DATE

STRIP No.

ROLL No.

SUBJECT

FOCAL
LENGTH

CAMERA

EXPOSURE

ALTITUDE

REMARKS

10